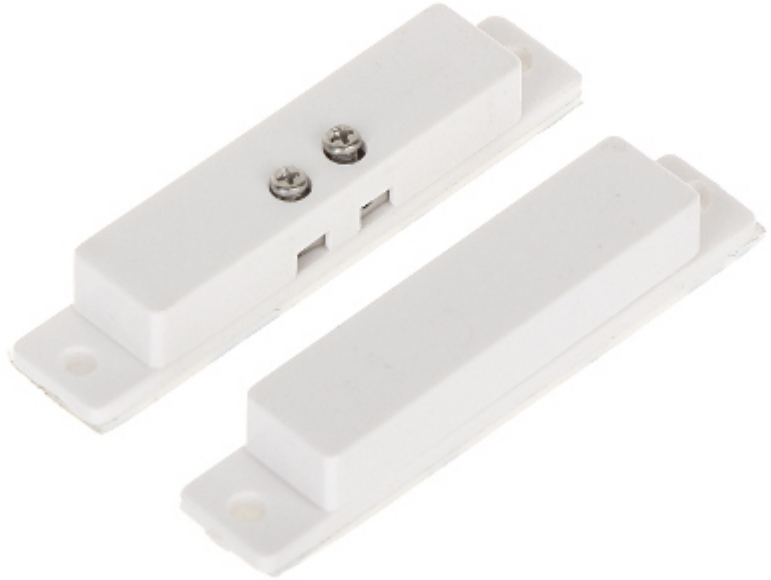


Code: KN-CA40

SIDE MAGNETIC CONTACT **KN-CA40**

The magnetic contacts can be used wherever required for controlling the status of doors, windows and/or other movable elements, e.g. for protection or monitoring of access to particular sites, spaces, facilities, in automatic control systems, etc.

The contact is designed for surface mounting.



Detection:	Opening the door or window
Maximum reed switched voltage:	20 V
Maximum switched current:	20 mA
Make distance:	18 mm
Break distance:	28 mm
Main features:	<ul style="list-style-type: none"> • Plastic (ABS) • NC output - a magnet close to a reed switch - does not trigger an alarm, the contacts are closed • Connectors : screw terminals • Leads out the cables : On the long edge
Color:	White
Weight:	0.01 kg
Dimensions:	50.7 x 9.9 x 7.4 mm - Reed switch 50.5 x 9.9 x 8.3 mm - magnet
Guarantee:	2 years