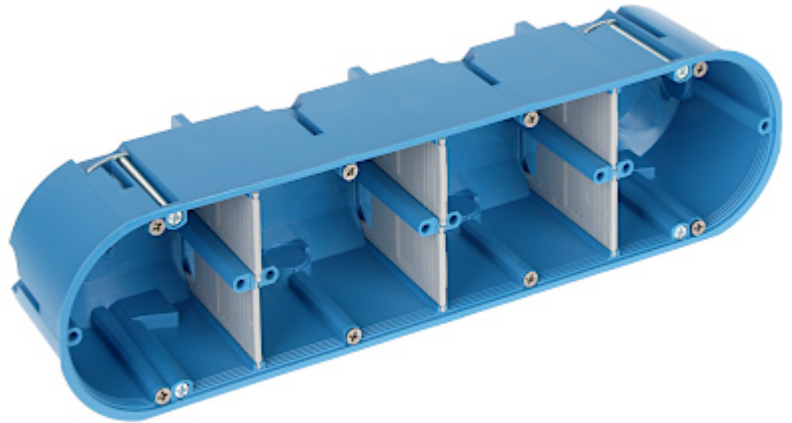


Code: P-4X60-D

FLUSH BOX 4-GANG **P-4X60-D** SIMET

Flush mounting box. The box is made from non-halogen, self-extinguishing plastic, intended for installation in hollow walls (plasterboard). Possibility of vertical or horizontal mounting.



Number of sections:	4
"Index of Protection":	IP30
Main features:	<ul style="list-style-type: none"> • Flush-mounted for hollow walls • stiffened construction • flammability index : 960 °C • Class V0 • 4 x 4 fixing points • 8 mounting screws, 4 special screws with holders to fastening to the wall, 6 cable partitions - included
Material:	halogen free and inflammable
Color:	Blue
Weight:	0.17 kg
Mounting holes distance:	60 mm
Dimensions:	286 x 71 x 63 mm
Manufacturer / Brand:	SIMET
Guarantee:	2 years