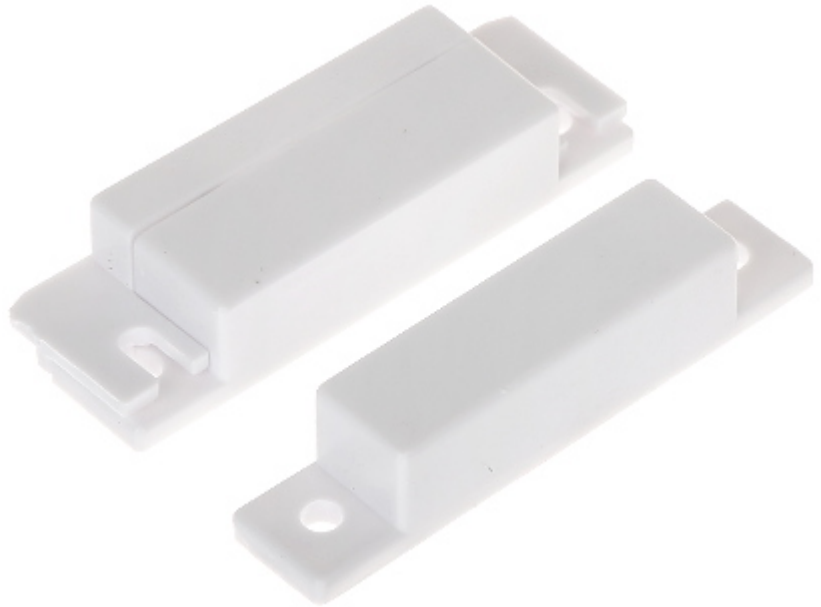


Code: KN-CA31/NO

## SIDE MAGNETIC CONTACT **KN-CA31/NO** NO OUTPUT

The magnetic contacts can be used wherever required for controlling the status of doors, windows and/or other movable elements, e.g. for protection or monitoring of access to particular sites, spaces, facilities, in automatic control systems, etc.  
The contact is designed for surface mounting.



Detection:	Opening the door or window
Maximum reed switched voltage:	20 V
Maximum switched current:	20 mA
Make distance:	18 mm
Break distance:	28 mm
Main features:	<ul style="list-style-type: none"><li>• Plastic (ABS)</li><li>• NO output</li><li>• Connectors : screw terminals</li><li>• Leads out the cables : On the long edge</li></ul>
Color:	White
Weight:	0.02 kg
Dimensions:	63.9 x 19.7 x 12.9 mm - Reed switch 64.2 x 13.0 x 12.9 mm - magnet
Guarantee:	2 years