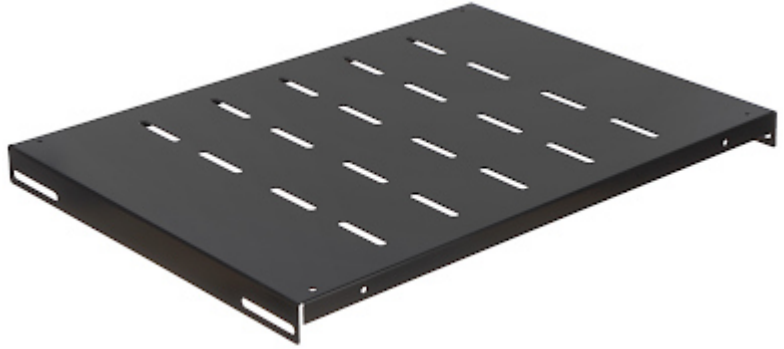


Code: P19F/360*P2

SHELF **P19F/360*P2** 360 mm

The shelf for the RACK 19" cabinet, designed for devices with housings which don't support the RACK cabinet mounting standard.

Shelf is designed to mount inside Rack cabinets with depth of 600 mm.



In package:	2 pcs The price for package
Width:	19 "
Mount:	four-point
Depth:	360 mm
Weight:	1.97 kg
Guarantee:	2 years