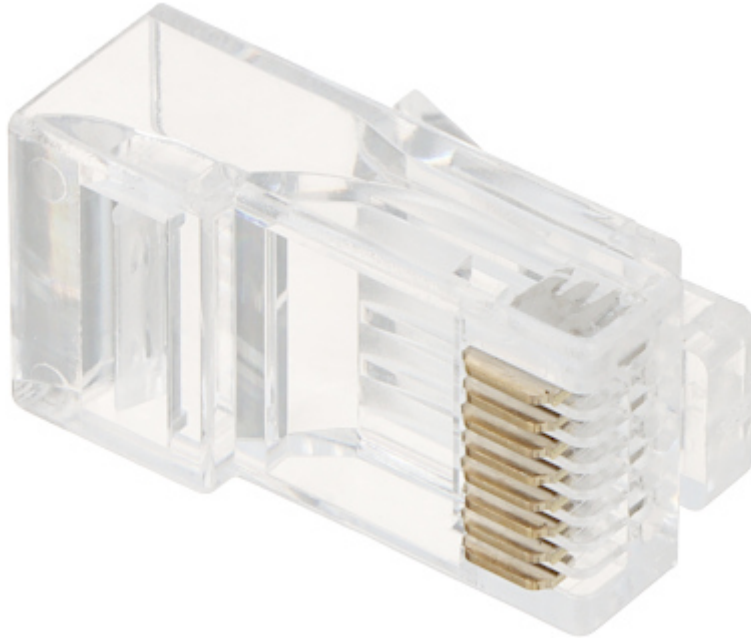


Code: RJ45/L6*P100

MODULAR PLUG **RJ45/L6*P100**



In package:	100 pcs The price for package
Connector type:	RJ-45 - Plug, 8 pin
Attachment of connector elements:	Crimping
Wire mounting:	Clamping on each wire with 3-pin edge
Application:	Twisted-pair cable
Material:	PET
Example of application:	UTP cat. 6
Main features:	<ul style="list-style-type: none">• Very easy and quick assembly• To crimp use the crimping tool