

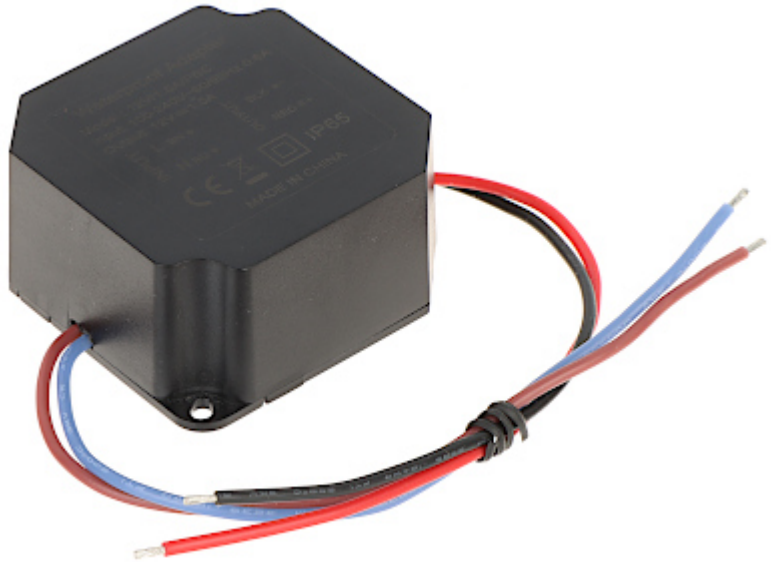
Code: 12V/1.5A/PSC

SWITCHING ADAPTER **12V/1.5A/PSC**

Hermetic power supply in a plastic housing, designed in particular for powering LED / IR LED illuminators.

Attention! If the power adaptor is using for continuous work (24H) the rated current of the adaptor should be less than 80% of the maximal current.

Please pay attention for proper cooling conditions of the power adaptor during work!



Adapter type:	Switching
Power voltage:	100 ... 240 V AC
Frequency range:	50 / 60 Hz
Output voltage:	12 V DC
Maximal load:	1.5 A
Output power:	18 W
Number of outputs:	1 pcs
Protections:	—
Housing type:	Plastic
"Index of Protection":	IP65
Main features:	Box casing designed to wall mounting
Weight:	0.15 kg
Dimensions:	60 x 60 x 30 mm
Guarantee:	2 years