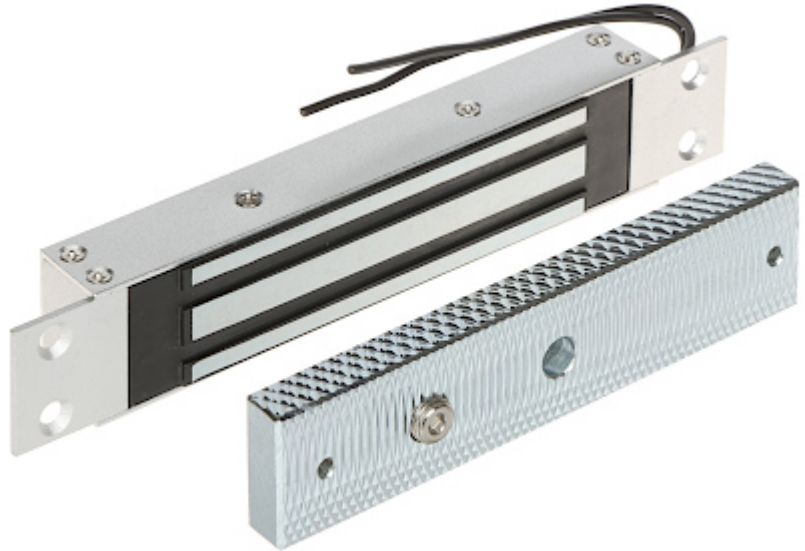


Code: ZEW-180

## ELECTROMAGNETIC LOCK **ZEW-180**

Electromagnetic lock, flush, single. With a simple design and modern manufacturing technology, is a reliable device to lock doors and gates. Force an entry closed by lock requires the use of force of > 180 kg. It operates reversibly - it is open when power is off. The lock is composed of two elements: electromagnet (usually mounted in the frame) and lock plate (usually mounted in the door). Error free operation of the lock is a result of lack the mechanical elements, which after some time become damaged.

Device is designed for indoor use only.



Load capacity:	180 kg
Rated voltage:	12 V DC
Current consumption:	500 mA
Main features:	• Internal flush mount
Weight:	0.87 kg (total)
Dimensions:	• 194 x 34 x 22 mm (electromagnetic lock) • 140 x 32 x 11.5 mm (metal plate)
Guarantee:	2 years