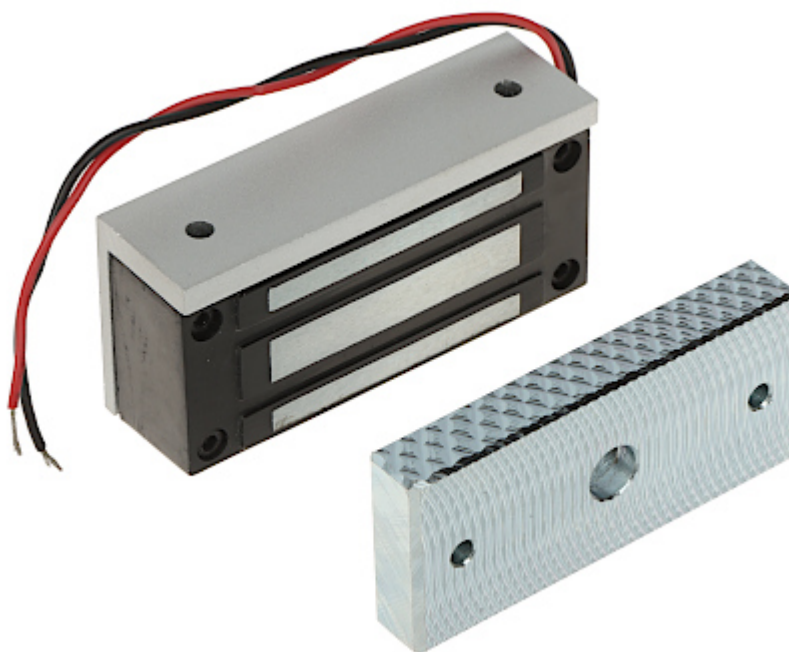


Code: ZE-60

## ELECTROMAGNETIC LOCK **ZE-60**

Electromagnetic lock, surface, single. The lock is intended for blocking small wooden, glass or metal doors. Force an entry closed by lock requires the use of force of > 60 kg. It operates reversibly - it is open when power is off. The lock is composed of two elements: electromagnet (usually mounted in the frame) and lock plate (usually mounted in the door). Error free operation of the lock is a result of lack the mechanical elements, which after some time become damaged.

Device is designed for indoor use only.



Load capacity:	60 kg
Rated voltage:	12 V DC
Current consumption:	100 mA
Main features:	Mounting bracket included - L type
Weight:	0.49 kg (total)
Dimensions:	<ul style="list-style-type: none"> <li>• 80 x 39 x 24 mm (electromagnetic lock)</li> <li>• 75 x 33 x 11 mm (metal plate)</li> </ul>
Guarantee:	2 years