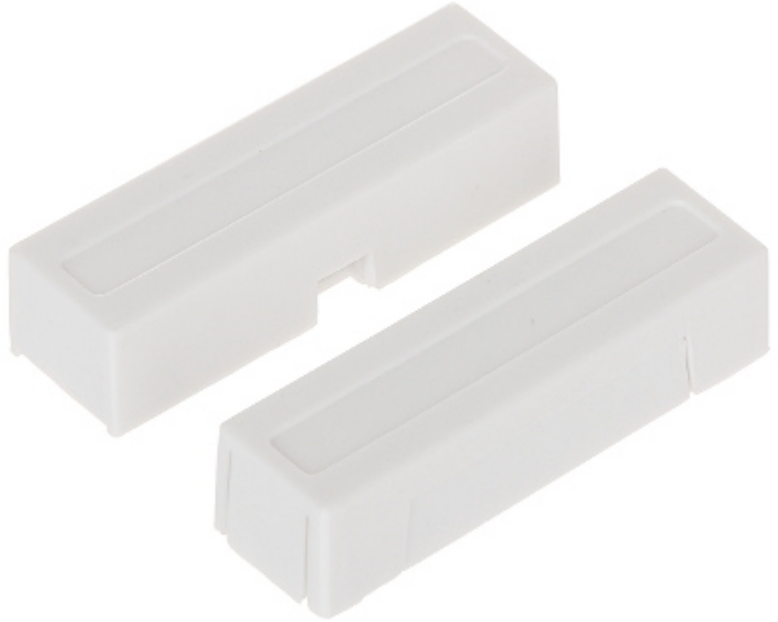


Code: KN-CA44B\*P10

## SIDE MAGNETIC CONTACT **KN-CA44B\*P10**

The magnetic contacts can be used wherever required for controlling the status of doors, windows and/or other movable elements, e.g. for protection or monitoring of access to particular sites, spaces, facilities, in automatic control systems, etc.

The contact is designed for surface mounting.



<b>In package:</b>	<b>10 pcs The price for package</b>
Detection:	Opening the door or window
Maximum reed switched voltage:	20 V
Maximal switched current:	20 mA
Make distance:	18 mm
Break distance:	28 mm
Main features:	<ul style="list-style-type: none"> <li>• Plastic (ABS)</li> <li>• NC output - a magnet close to a reed switch - does not trigger an alarm, the contacts are closed</li> <li>• Connectors : screw terminals</li> <li>• Leads out the cables : On the long edge</li> </ul>
Color:	White
Weight:	0.02 kg
Dimensions:	50.8 x 15 x 12.2 mm
Guarantee:	2 years