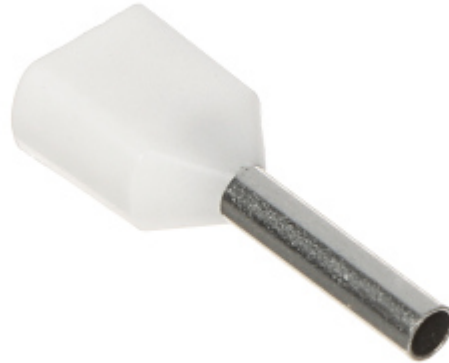


Code: TUL-2X0.5/8/DIN-W\*P100

## DOUBLE CABLE FERRULE **TUL-2X0.5/8/DIN-W\*P100**

Cable ferrules are designed for clamping on the stranded wires to keep all loose cable wires together and reduce the risk of a short circuit.



<b>In package:</b>	<b>100 pcs The price for package</b>
Cross section:	2 x 0.5 mm <sup>2</sup> / AWG 20
Contact material:	Cu / Indoor coverage area Sn
Insulation:	polyamide 6.6
Application:	Stranded wires
Color:	White
Dimensions:	3.1 x 5.3 x 14.8 mm
Guarantee:	2 years