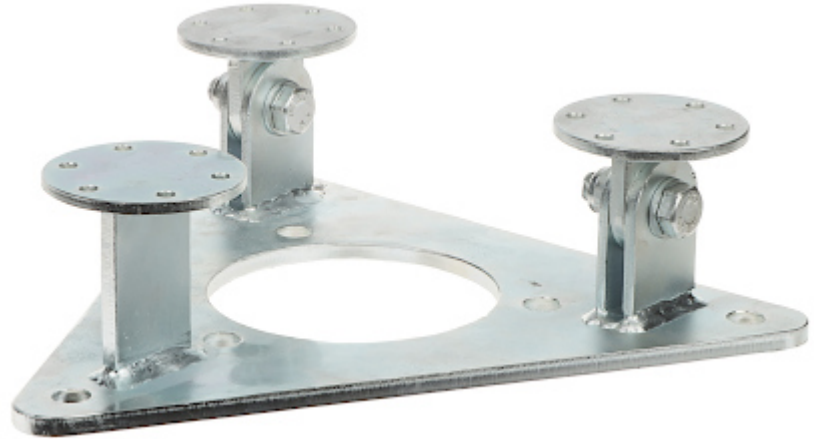


Code: MK-1.5/POD-HD

FOOTING FOR MASTS **MK-1.5/POD-HD**

The MK-1.5/POD-HD reinforced base for free-standing truss masts from the MK-1.5 series is intended for installation in mountain conditions and other places where strong gusts of wind may occur.



Material:	Steel - Hot-dip galvanized
Main features:	<ul style="list-style-type: none">• The design allows the mast to tilt up to 90° from the vertical,• Plate thickness : 10 mm,• Reinforced hinges
Weight:	7.27 kg
Dimensions:	395 x 350 x 107 mm
Guarantee:	3 years
Manufacturer / Brand:	DELTA