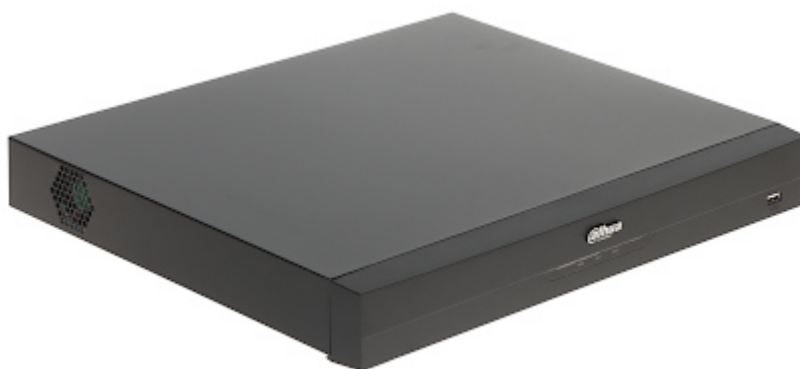


Code: NVR5232-16P-EI

NVR **NVR5232-16P-EI** 32 CHANNELS, 16 PoE WizSense DAHUA

NVR equipped with advanced functions of intelligent image analysis.



Standard:	TCP/IP
Supported resolutions:	max. 32 Mpx
Video outputs:	1 pcs HDMI 4K 1 pcs VGA
Audio support:	<ul style="list-style-type: none"> • 32 Channels - Audio from cameras • Bi-directional audio streaming support
Audio inputs:	1 pcs CINCH
Audio outputs:	1 pcs CINCH
Image compression method:	Smart H.265+ / H.265 / Smart H.264+ / H.264 / MJPEG
Bitrate:	max. 384 Mbps
Supported hard drives:	2 x 16 TB SATA
Recording modes:	Manual, Sensor, Motion detection, Schedule
External storage devices backup:	Backup to USB drive (pendrive, external drive)
Searching and playback the records:	<ul style="list-style-type: none"> • Records searching: by time and events type. Records playback: forward, backward, fast, slow • Advanced searching (to the one second accuracy) • AcuPick support - technology that uses artificial intelligence on both front-end and back-end to search through massive amounts of video data to quickly locate targets with high precision • Smart Playback function • Records playback from max. 16 channels in the same time @ 4 Mpx (without AI) • Records playback from max. 12 channels in the same time @ 4 Mpx (AI)
Network interface:	1 x RJ-45 10/100/1000 Base-TX
Network functions:	Full support via network, Remote records copying, Web Server built-in
Network protocols:	HTTP, HTTPS, TCP/IP, IPv4/IPv6, RTSP, UDP, SNMP, NTP, DHCP, DNS, SMTP, UPnP, IP Filter, PPPoE, FTP, DDNS, Alarm Server, IP Search, Multicast, P2P, Auto Register, iSCSI
ONVIF:	21.12



DATA SHEET

Default IP address:	192.168.1.108
Default admin user / password:	admin / - The administrator password should be set at the first start
Mobile phones support:	Port no.: 37777 or access by a cloud (P2P) <ul style="list-style-type: none">• Android: Free application DMSS• iOS (iPhone): Free application DMSS See how to configure the P2P function in Dahua recorders and how to enable the mobile application
Web browser access ports:	80, 37777
PC client access ports:	37777
Mobile client access ports:	37777
RTSP URL:	<ul style="list-style-type: none">• rtsp://admin:haslo@192.168.1.108:554/cam/realmonitor?channel=1&subtype=0 - Main stream• rtsp://admin:haslo@192.168.1.108:554/cam/realmonitor?channel=1&subtype=1 - Sub stream
USB:	<ul style="list-style-type: none">• 1 pcs USB 2.0• 1 pcs USB 3.0
Serial ports:	RS-485, RS-232
Alarm inputs / outputs:	4 / 2
PTZ control:	<ul style="list-style-type: none">• IP Speed Dome Cameras• RS-485 - PELCO-D/P and others
Motion Detection:	✓
Intelligent Image Analysis:	✓
Main features:	<ul style="list-style-type: none">• Intelligent Image Analysis : crossing the line (tripwire), intrusion, face detection• SMD PLUS - searching for an object classified as: human, motor vehicle• Filtering of false alarms based on the recognition of persons and vehicles• Face recognition• Face analysis: determination of sex, age and characteristic elements of appearance (glasses, facial hair, mask)• Support for up to 20 face databases, including 20 000 face images• In the base other than face photography, can also be stored such information as: name, sex, date of birth, nationality, address, ID number• Intelligent face search by metadata of different targets or uploading pictures of faces to the device and comparing them with recorded faces by similarity• Privacy zones• Cooperation with POS (Point of Sale) terminals <p>Functions implemented in cooperation between the recorder and cameras that support these functions :</p> <ul style="list-style-type: none">• ANPR• Authorized and unauthorized license plate lists: up to 20 000 records• counting people / vehicles• crowd gathering estimation• heat map• metadata handling - automatic photo taking and collection of information enabling the subsequent identification of people and vehicles that triggered the alarm (clothing, silhouette, face, features of motor and non-mechanical vehicles)
Mouse support:	✓
IR remote controller in the set:	—



DATA SHEET

Switch PoE:	16-port PoE Switch built-in, 25.5 W / Channel - PoE (802.3af/at) + ePoE Ports 1-8 support ePoE
Maximum total switch load:	130 W
Power supply:	100 ... 240 V AC / 47 ... 63 Hz
Power consumption:	max. 10 W (without HDD)
Operation temp:	-10 °C ... 55 °C
Weight:	2.62 kg
Dimensions:	375 x 329 x 53 mm
Supported languages:	Polish, English, Bulgarian, Czech, Finnish, Greek, Romanian, Serbian, Slovenian, Hungarian
Manufacturer / Brand:	DAHUA
Guarantee:	3 years