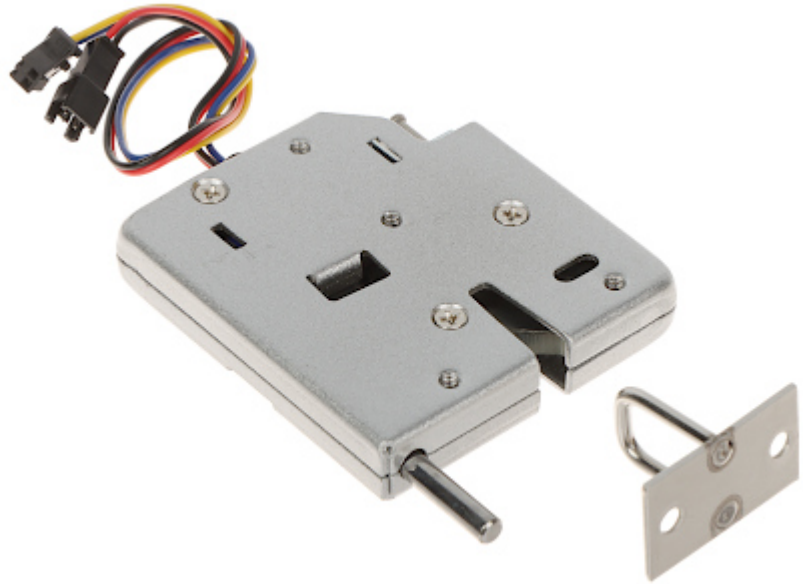


Code: ATLO-DT-C07

ELECTROMAGNETIC CABINET LOCK **ATLO-DT-C07**

The ATLO-DT-C07 cabinet lock allows for convenient and safe management of access to cabinets or deposit boxes in places such as: airports, shopping centers, swimming pools, gyms, sports halls, etc. The lock has been equipped with a spring lever, thanks to which the cabinet door will automatically open when unlocked.

Due to its construction, the lock remains closed in the event of a power failure. It is possible to release the lock of the lock mechanically, but it requires direct access to the mechanism.



Rated voltage:	12 V DC
Current consumption:	2 A
Application:	right-side door / left-side door
Ratched lock:	—
Memory function:	—
Reverse action:	—
Clearance adjustment:	—
Main features:	<ul style="list-style-type: none"> • Built-in spring lever, • Maximum diameter of the lock latch : 3 mm, • Possibility of mechanical unlocking of the lock mechanism • Lock state check • Color : Silver
Allowable load of the door impacting the lock:	150 kg
Weight:	<ul style="list-style-type: none"> • 0.18 kg - Door lock (strike) • 0.01 kg - Staple
Dimensions:	<ul style="list-style-type: none"> • 73 x 66 x 14 mm - Door lock (strike) • 35 x 20 x 25 mm - Staple
Manufacturer / Brand:	ATLO
Guarantee:	2 years

