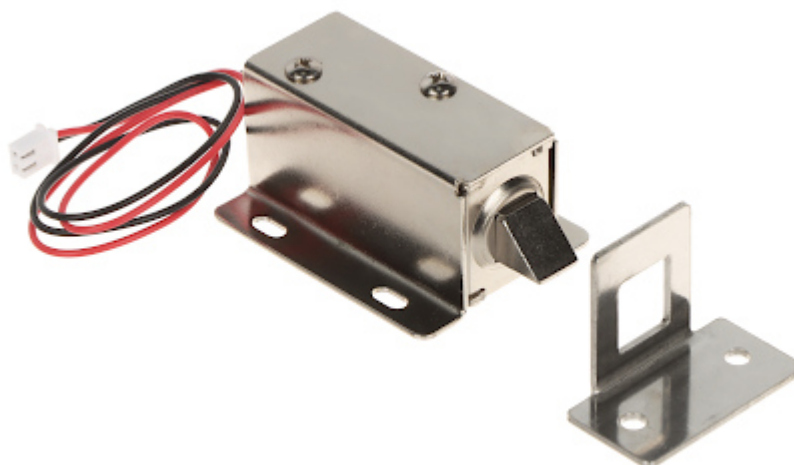


Code: ATLO-DT-L08

ELECTROMAGNETIC CABINET LOCK **ATLO-DT-L08**

The ATLO-DT-L08 cabinet lock allows for convenient and safe management of access to cabinets or deposit boxes in places such as: airports, shopping centers, swimming pools, gyms, sports halls, etc.

Due to its construction, the lock remains closed in the event of a power failure.



Rated voltage:	12 V DC
Current consumption:	0.8 A
Application:	right-side door / left-side door
Ratched lock:	—
Memory function:	—
Reverse action:	—
Clearance adjustment:	—
Main features:	<ul style="list-style-type: none"> • The lock remains closed when it is not powered - bolt extended • Bolt slide out distance : 10.5 mm • Opening with a voltage impulse : < 1 s ... max. 10 s
Allowable uninterrupted operation time:	≤ 10 s
Weight:	<ul style="list-style-type: none"> • 0.152 kg - Door lock (strike) • 0.014 kg - Staple
Dimensions:	<ul style="list-style-type: none"> • 54 x 42 x 28 mm - Door lock (strike) • 38 x 20 x 29 mm - Staple
Manufacturer / Brand:	ATLO
Guarantee:	2 years