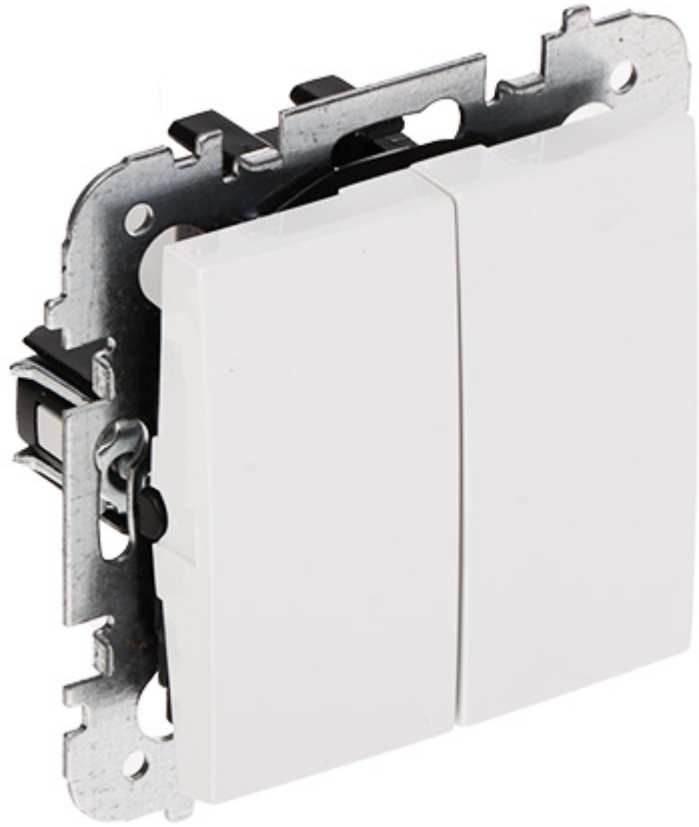


Code: SANTRA/4111-10/EPN

TWO GANG SWITCH **SANTRA/4111-10/EPN** 250 V 10 A Elektro-Plast

The two-gang switch is designed to fix with frame plates of the Santra series.



Device type:	Two Gang Switch (bistable)
Rated voltage:	250 V AC
Rated current:	10 A (inductive load)
Connectors type:	Spring terminals
Application:	Flush-mounted, Santra product series
Backlight:	—
Assembly:	Claw or screw mounting
Main features:	Compliance with PN-EN-60669-1:2018-04 standard
"Index of Protection":	IP20
Housing:	Plastic (ABS)
Color:	White
Weight:	0.068 kg
Dimensions:	75 x 75 x 42 mm



DATA SHEET

Manufacturer / Brand:	Elektro-Plast Nasielsk
Guarantee:	7 years

