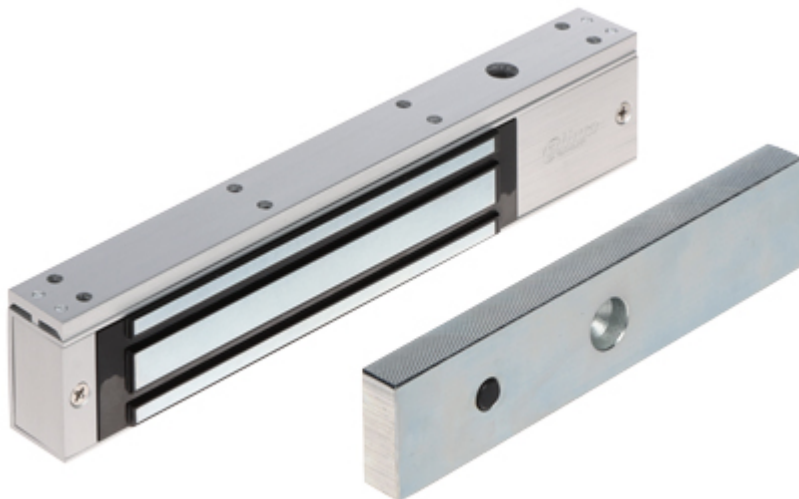


Code: ASF280A-V1

ELECTROMAGNETIC LOCK **ASF280A-V1** DAHUA

Electromagnetic lock, surface, single. With a simple design and modern manufacturing technology, is a reliable device to lock doors and gates. Force an entry closed by lock requires the use of force of > 280 kg. It operates reversibly - it is open when power is off. The lock is composed of two elements: electromagnet (usually mounted in the frame) and lock plate (usually mounted in the door). Error free operation of the lock is a result of lack the mechanical elements, which after some time become damaged.

Device is designed for indoor use only.



Load capacity:	280 kg
Rated voltage:	12 V DC
Current consumption:	510 mA
Main features:	<ul style="list-style-type: none"> • LED indication, • Door status detection • The NO/NC output indicating opening the door • Leaving the door open after a power failure • For indoor use • Door thickness range : 5 ... 15 cm
Weight:	1.95 kg (total)
Dimensions:	<ul style="list-style-type: none"> • 250 x 49 x 26 mm (electromagnetic lock) • 180 x 38 x 13 mm (metal plate)
Manufacturer / Brand:	DAHUA
Guarantee:	2 years