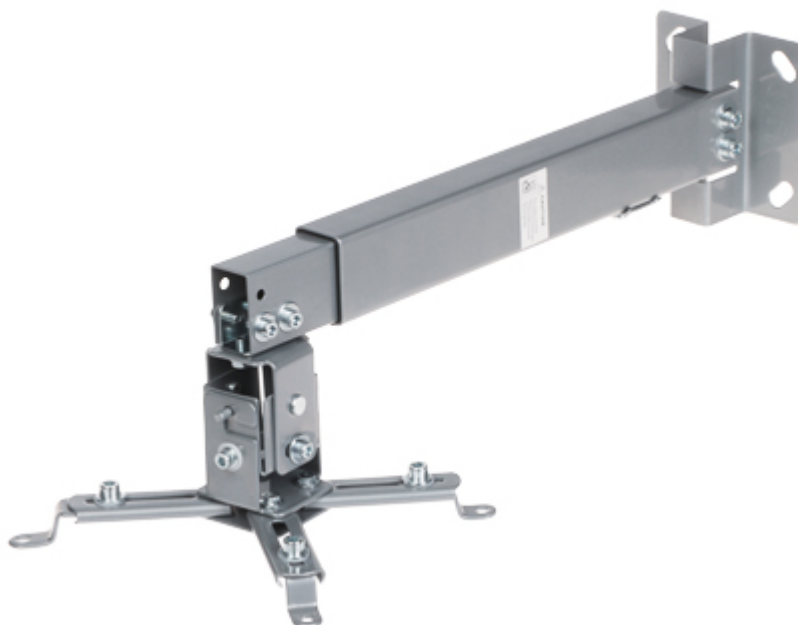


Code: PD-670

PROJECTOR MOUNT **PD-670**

The PD-670 is designed to mount the multimedia projector. Wall or ceiling mounting.

Maximal load capacity is 20 kg. It should be mounted on the surface, which construction has to carry the required load, including a wide margin of safety.



Bearing capacity:	20 kg
Distance from mounting surface:	<ul style="list-style-type: none"> • 430 ... 650 mm (vertical), • 350 ... 560 mm (horizontal)
Projector mounting holes distances:	Ø 225 ... 316 mm
Tilt adjustment:	-15 ° ... 15 °
Horizontal rotation:	-8 ° ... 8 °
Main features:	Possibility to mount on the wall or ceiling
Color:	Silver
Material:	Steel - powder painted
Weight:	1.5 kg
Guarantee:	2 years