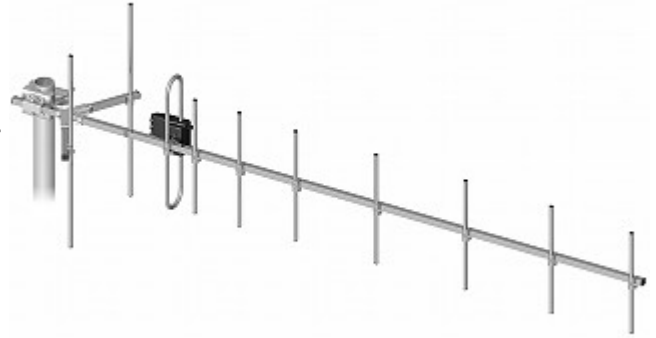


Code: CDMA-10/400-470/FME

DIRECTIONAL ANTENNA **CDMA-10/400-470/FME**

The CDMA-10/400-470/FME antenna is a modern device for enabling/improving advanced data services for broadband Internet access in CDMA technology in rooms and places where the simple built-in antennas of the used equipment do not provide satisfactory results.



Frequency range:	400 ... 470 MHz
Connector:	FME Socket
Gain :	9.5 ... 12 dB
Impedance:	50 Ω
Polarization:	Vertical
Main features:	<ul style="list-style-type: none"> • Length of the cable : 10 m • Number of elements : 10 • Very easy and quick assembly
Weight:	1.1 kg
Dimensions:	1400 mm
Guarantee:	2 years