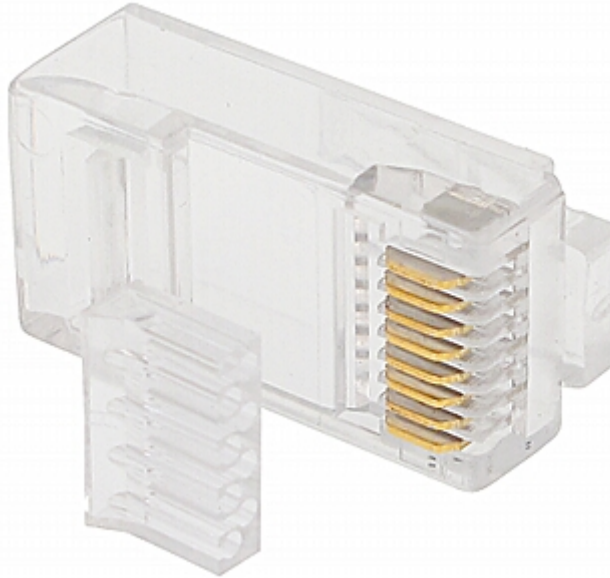


Code: RJ45/6*P10

MODULAR PLUG **RJ45/6*P10**



In package:	10 pcs The price for package
Connector type:	RJ45 (8P8C) Plug 8 pin
Attachment of connector elements:	Crimping
Wire mounting:	Clamping on each wire with 2-pin edge
Application:	Twisted-pair cable
Material:	PET
Example of application:	<ul style="list-style-type: none"> • UTP cat. 6
Main features:	<ul style="list-style-type: none"> • Very easy and quick assembly • To crimp use the crimping tool HT-546
Weight:	0.002 kg
Guarantee:	2 years