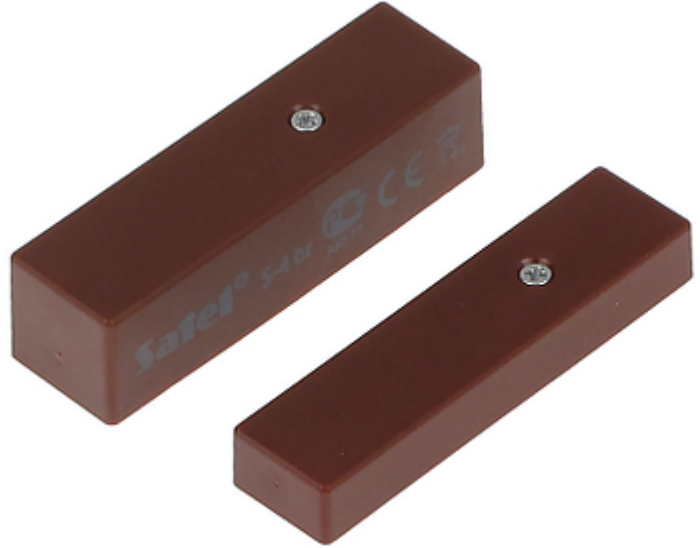


Code: S-4-BR

## MAGNETIC CONTACT **S-4-BR** SATEL

The magnetic contacts can be used wherever required for controlling the status of doors, windows and/or other movable elements, e.g. for protection or monitoring of access to particular sites, spaces, facilities, in automatic control systems, etc.



Detection:	Opening the door or window
Maximum reed switched voltage:	20 V
Maximal switched current:	20 mA
Make distance:	18 mm
Break distance:	28 mm
Main features:	<ul style="list-style-type: none"> <li>• Cable terminals</li> <li>• Tamper signaling</li> </ul>
Color:	Brown
Weight:	0.024 kg
Dimensions:	<ul style="list-style-type: none"> <li>• Transmitter : 58.5 x 16.5 x 15.2 mm</li> <li>• magnet : 58.5 x 14.7 x 8.3 mm</li> </ul>
Manufacturer / Brand:	SATEL
Guarantee:	2 years