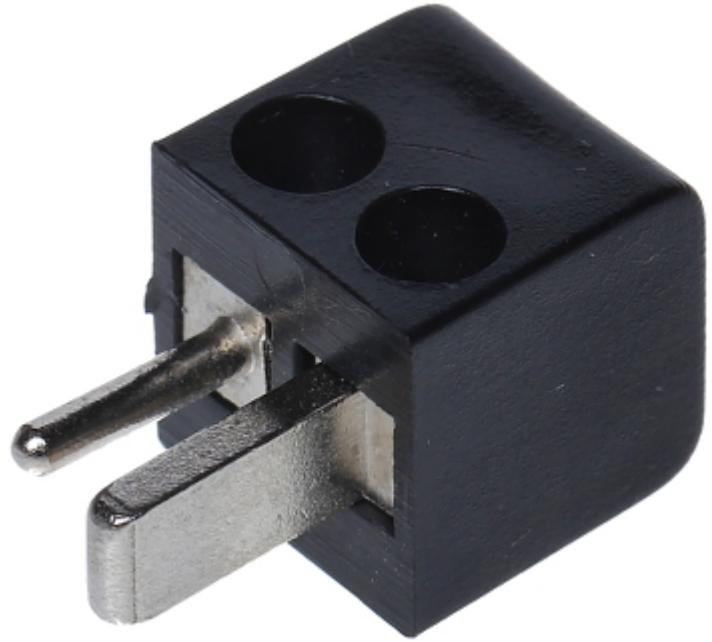


Code: WG2/KAT

## ANGULAR SPEAKER PLUG **WG2/KAT**

Angular speaker plug, twist-on.



Connector type:	plug / screw terminals
Material:	PET / Metal
Color:	Black
Application:	Speaker cable
Weight:	0.002 kg
Dimensions:	18.5 x 11 x 11 mm
Guarantee:	2 years