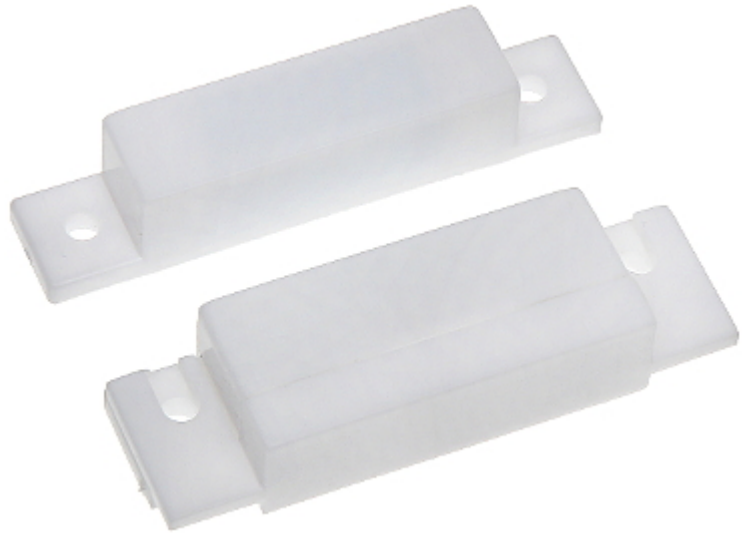


Code: KN-04

SIDE MAGNETIC CONTACT **KN-04**

The magnetic contacts can be used wherever required for controlling the status of doors, windows and/or other movable elements, e.g. for protection or monitoring of access to particular sites, spaces, facilities, in automatic control systems, etc.

The contact is designed for surface mounting.



Detection:	Opening the door or window
Maximum reed switched voltage:	20 V
Maximum switched current:	20 mA
Make distance:	29 mm
Break distance:	30 mm
Main features:	<ul style="list-style-type: none">• Plastic (ABS)• NC output - a magnet close to a reed switch - does not trigger an alarm, the contacts are closed
Color:	White
Weight:	0.022 kg
Dimensions:	<ul style="list-style-type: none">• 64 x 13 x 13 mm• 64 x 19.5 x 13 mm
Guarantee:	2 years