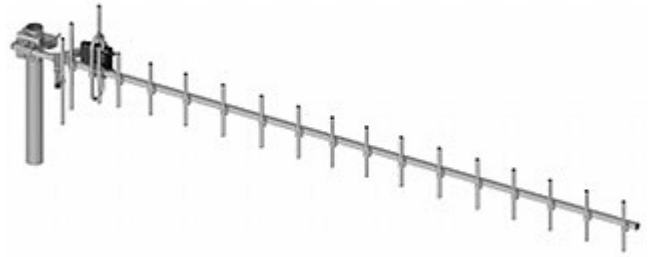


Code: ATK-20/850-960

DIRECTIONAL ANTENNA **ATK-20/850-960** GSM

Antenna with integrated balun. Some antenna parts are made from aluminum, steel construction elements are galvanized. 50 Ω coaxial cable must be soldered to the impedance transformer according to the included manual. The cable is not included in the kit and must be bought separately.



Frequency range:	850 ... 960 MHz GSM
Connector:	—
Gain :	max. 16.5 dB
Impedance:	50 Ω
Polarization:	Vertical
Main features:	• Number of elements : 20
Weight:	0.9 kg
Dimensions:	1700 mm
Guarantee:	2 years