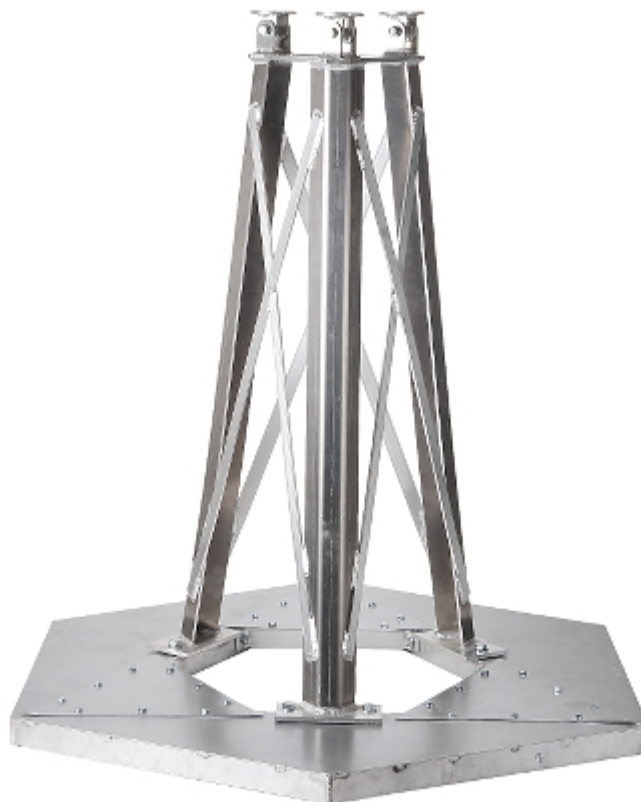


Code: MK-1.5/POD-Z

BASE TO BURY **MK-1.5/POD-Z**

The base is designed to be buried in the ground, dedicated to the free-standing truss masts of MK-1.5 series. It does not require filling with concrete.

After packing, the base fits on the pallet and can be easily transported by a passenger car.



Material:	Aluminum
The depth of the trench:	~ 1.26 m
Main features:	<ul style="list-style-type: none"> • The total resistance to corrosion • It does not require filling with concrete • The design allows the mast to tilt up to 60° from the vertical • After packing, the base fits on the pallet and can be easily transported by a passenger car
Support:	max. 4 x Truss Mast MK-1.5
Weight:	37,6 kg
Dimensions:	1380 x 1200 x 1365 mm
Guarantee:	2 years