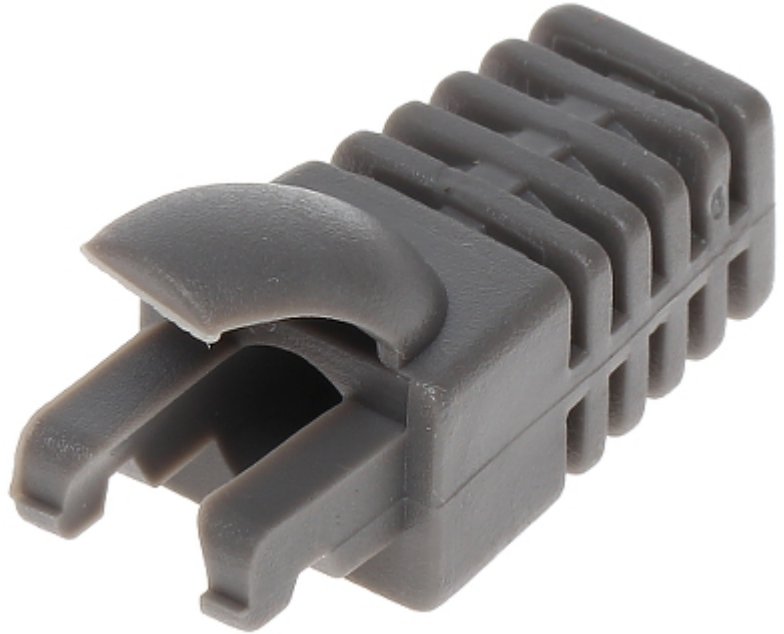


Code: RJ45/WP-S/INF*P100

RJ-45 PLUG INTERNAL SHIELD **RJ45/WP-S/INF*P100**

The shield should be mounted before crimping the RJ45 plug. After crimping the plug there is no possibility to remove the shield.



| | |
|--------------------|--------------------------------------|
| In package: | 100 pcs The price for package |
| Application: | RJ-45 modular plug internal shield |
| Material: | Rubber |
| Color: | Gray |
| Weight: | 0.001 kg |
| Dimensions: | 27 x 12 x 15 mm |
| Guarantee: | 2 years |