



User Manual

Code: PERFECTA-32-WRL-SET-A/IT
ALARM CONTROL PANEL **PERFECTA-32-WRL-SET-A/IT** SATEL

Warning!

Please read the user manual included in this work as it contains important information related with safety of installation and use of the device.

Only persons who read the user manual may use the device.

The user manual must be kept because it may be required in the future. The device is to be used exclusively for purposes specified in this user manual.

The device must be unpacked prior to starting-up. After removing the packaging make sure the device is in working order.

If the product has defects, it should not be used until it is repaired.

The product is intended for use at home and commercial use and may not be used for other than intended use.

The manufacturer is not liable for damages resulting from not adhering to the rules contained in the user manual, therefore, we recommend to follow the aforementioned safety rules for operation and maintenance of the device. In this way you will ensure yourself safety and avoid causing damage to the device.

The manufacturer and the supplier are not liable for losses or damages arising out of the product, including financial or intangible losses, loss of profits, income, data, pleasure from use of the product or other products related with it - indirect, incidental or consequential loss or damage. The above provisions apply whether the loss or damage concerns:

1. Deterioration of quality or the lack of operation of the products or products related with it due to damage as well as the lack of access to the product when it is undergoing repair, which results in stoppage the loss of user's time or a break in business activity;
2. Improper results of operation of the product or products related with it;
3. It applies to losses and damages according to any legal category, including negligence and other losses, termination of a contract, expressed or implied guarantee and strict liability (even if the manufacturer or the supplier was notified about the possibility of occurrence of such damages).

Safety measures:

Particular attention at designing was directed to quality standards of the device where ensuring safety of operation is the most important factor.

The device must be secured against contact with caustic, staining and viscous fluids.

The device was designed in such a way that it restarts operation when power supply is restored after a break.

Attention! We recommend using protections to further protect the device from possible overvoltages in installations. Surge protectors are effective protection against accidental pass to the device voltages higher than the rated. Damages caused by pass the voltages higher than specified in manual, are not under warranty.

Turn off the device before transporting it.

Prior to connecting the device to a power source check whether the supplied voltage is consistent with rated voltage specified in the user manual.

Proper product disposal:

A marking of a crossed out waste bin indicates that the product may not be disposed together with other household waste in the entire EU. To avoid possible damage to the natural environment of health due to uncontrolled waste disposal, therefore, it should be handed over for recycling, propagating in this way sustainable use of natural resources.

To return a worn-out product, use a collection and disposal system of this type of equipment or contact a seller from whom it was purchased. He will then be recycled in an environmentally-friendly way.

The PERFECTA-32-WRL-SE alarm system kit including alarm control panel, the OPU-4-P enclosure and GSM antenna.

The alarm control panels of PERFECTA series are intended for security of small and medium-sizes facilities, such as flats, single-family houses, segments in terraced houses, offices, small companies, etc. They provide protection in accordance with the requirements of Grade 2 EN 50131.

The PERFECTA-32-WRL-SE control panel allows to create a wireless and hybrid installation (connection to the traditional wired system). Bi-directional communication with the PRF-LCD-WRL wireless keypads and the MSP-300-R sirens takes place in the 433 MHz band. In a wireless installation are also used the MICRA series detectors and new MPT-350 keyfobs. This gives the ability to easily expand the existing system, without having to lay additional cable tracks.

The control panel in addition to basic, traditional methods of system control offers also, among other things functional and intuitive application for mobile devices PERFECTA CONTROL.

Built-in GSM/GPRS module gives wide possibilities: enables cooperation with mobile application, with PUSH messages support, remote configuration with using the PERFECTA Soft application, events monitoring (eg. to the monitoring station of security agency), voice messaging, control by SMS and audio verification (listening the sounds from the protected object). Two nano-SIM cards are supported, it ensures the continuity of communication: when occurs any problems with s signal range of first operator, automatically selects the second card.

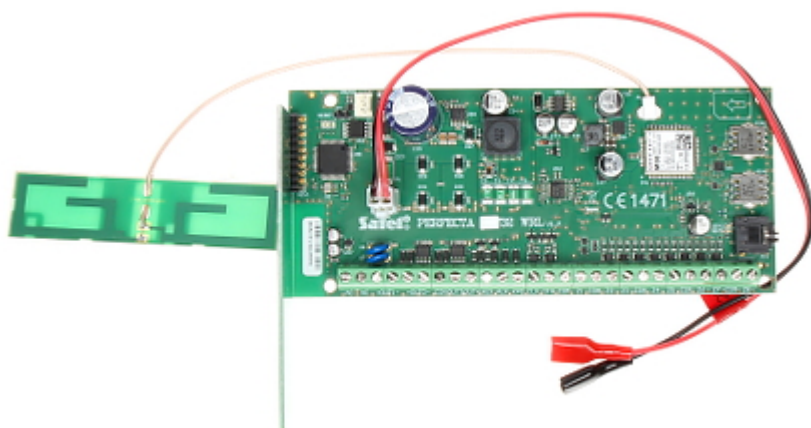
NOTE: the control panel has only Italian language.



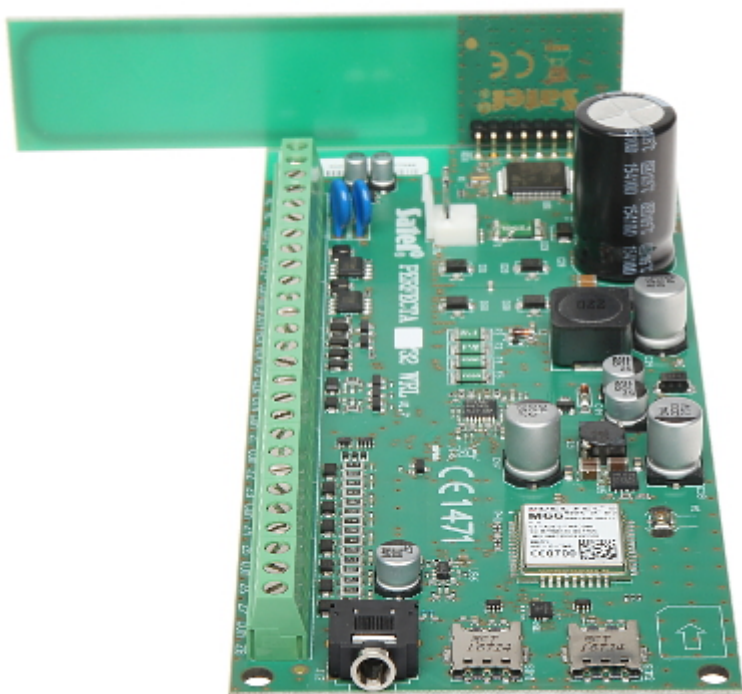
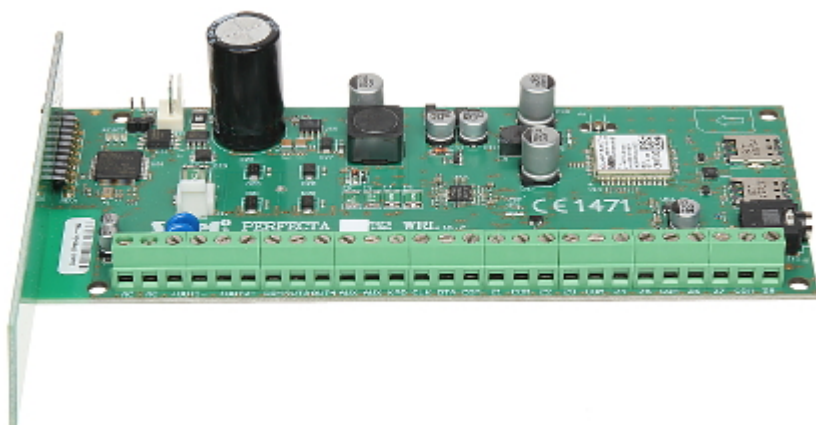
Mainboard inputs:	8 pcs - programmable
Mainboard outputs:	4 pcs - programmable
Maximal number of supported inputs:	32 pcs - programmable
Maximal number of supported outputs:	16 pcs - programmable
Maximal load:	2 A
Users + admins:	15 + 1
Partitions:	—
Zones:	2
Expansion modules:	✓
Events memory:	3584
Timers:	8
Supported keypads:	max. 4 pcs
Supporting the wireless ABAX system via bus:	—
Keyboard included:	—
Enclosure included:	✓
Protection class (Grade):	2

Main features:	<ul style="list-style-type: none"> • Built-in GSM/GPRS module with 2 SIM slots (SMS, monitoring to the station, mobile application, PUSH messaging) • Built-in voice module (playing voice messages on the need for telephone messaging) - 16 voice messages • Built-in module of alarm acoustic verification (listening the sounds) • Bi-directional communication with the PRF-LCD-WRL wireless keypads and the MSP-300-R sirens takes place in the 433 MHz band • Wireless one-way communication with MICRA series detectors and the MPT-350 keyfobs in the 433 MHz band • 3 arming modes for each zone • The ability to assign the input to the two zones • Controlled by the user or by using timers • Communication bus for connecting the keypads (PRF-LCD) and extension modules (INT-E, INT-O, INT-ORS) • Edition of the names (users, zones, inputs, outputs and modules) for easy control of the system and its monitoring • Built-in advanced power adapter with extended diagnostics - 2 power outputs • Vibration detectors and rollerblinds detectors support • The ability to firmware upgrade
Power supply:	18 V AC
Operation temp:	-10 °C ... 55 °C
Permissible relative humidity:	93 %
Dimensions:	160 x 68 mm - PCB 283 x 263 x 91 mm - Housing
Weight:	1.244 kg (with enclosure and accessories)
Supported languages:	Italian
Manufacturer / Brand:	SATEL
Guarantee:	2 years

Control panel mainboard:



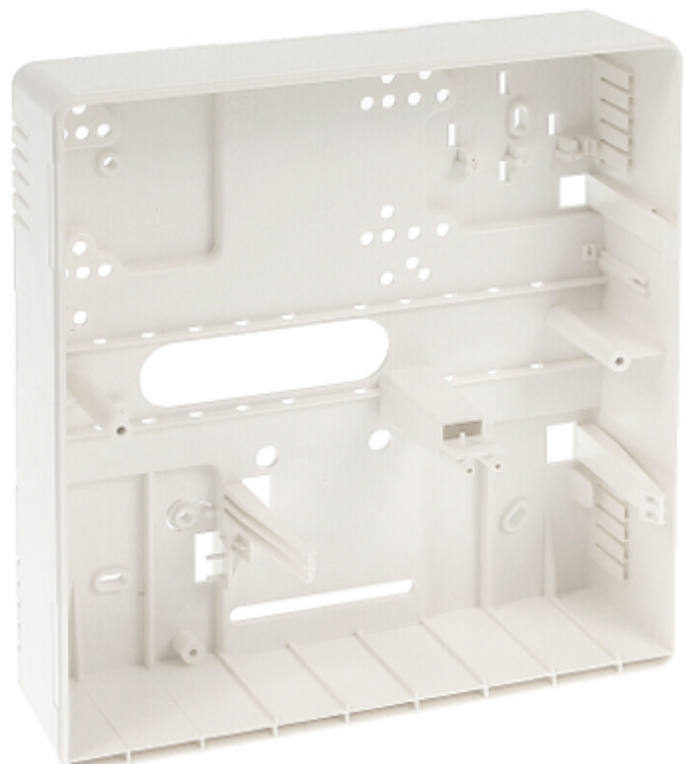
Connectors:



Housing:



Internal view of the housing:

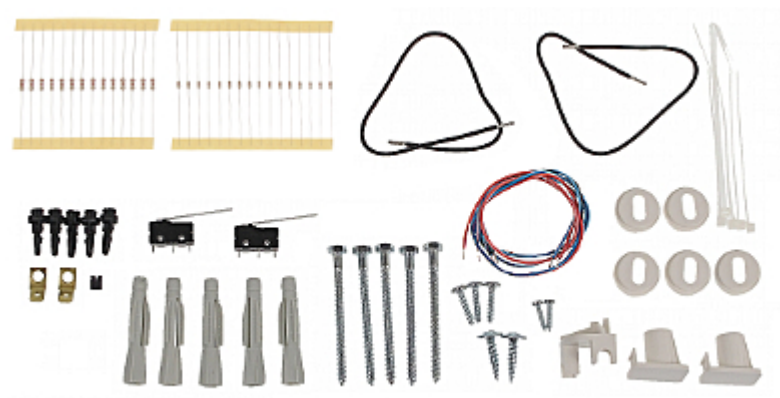


In the kit:



User Manual

Code: PERFECTA-32-WRL-SET-A/IT
ALARM CONTROL PANEL **PERFECTA-32-WRL-SET-A/IT** SATEL



PACKAGE

Dimensions (L x W x H): 0x0x0 mm	Gross Weight: 0 kg
----------------------------------	--------------------