

Warning!

Please read the user manual included in this work as it contains important information related with safety of installation and use of the device.

Only persons who read the user manual may use the device.

The user manual must be kept because it may be required in the future. The device is to be used exclusively for purposes specified in this user manual.

The device must be unpacked prior to starting-up. After removing the packaging make sure the device is in working order. If the product has defects, it should not be used until it is repaired.

The product is intended for use at home and commercial use and may not be used for other than intended use.

The manufacturer is not liable for damages resulting from not adhering to the rules contained in the user manual, therefore, we recommend to follow the aforementioned safety rules for operation and maintenance of the device. In this way you will ensure yourself safety and avoid causing damage to the device.

The manufacturer and the supplier are not liable for losses or damages arising out of the product, including financial or intangible losses, loss of profits, income, data, pleasure from use of the product or other products related with it - indirect, incidental or consequential loss or damage. The above provisions apply whether the loss or damage concerns:

1. Deterioration of quality or the lack of operation of the products or products related with it due to damage as well as the lack of access to the product when it is undergoing repair, which results in stoppage the loss of user's time or a break in business activity;
2. Improper results of operation of the product or products related with it;
3. It applies to losses and damages according to any legal category, including negligence and other losses, termination of a contract, expressed or implied guarantee and strict liability (even if the manufacturer or the supplier was notified about the possibility of occurrence of such damages).

Safety measures:

Particular attention at designing was directed to quality standards of the device where ensuring safety of operation is the most important factor.

The device must be secured against contact with caustic, staining and viscous fluids.

More and more home devices to LAN, RTV, CCTV installations are made with a view to the RACK system, so that their installation is aesthetically pleasing, and that devices are protected against accidental mechanical damages.

The double-section hanging cabinets mounted on wall provide access to devices both from the front and rear.

The EPRADO-R19-12U/550/2S cabinet is suitable for mounting all sorts of devices in standard 19" rack housings. Ideal solution for installing DVRs, power units, splitters, headends, network devices, etc. Inside the cabinet can be also place the devices that are not in standard RACK-19" housings, for example DVRs, multiswitches, RTV-SAT amplifiers, modulators. For this purpose the user should mount additional shelf/shelves available for RACK cabinet.

The RACK cabinet has many openings ensuring adequate air circulation. Additionally, it is possible to install fans to increase the ventilation.

Attention! The Rack cabinet is fully assembled and ready to use.





User Manual

Code: EPRADO-R19-12U/550/2S
HANGING RACK CABINET, DOUBLE-SECTION **EPRADO-R19-12U/550/2S**

Internal width:	19 "
Internal height:	12 U
Internal depth:	320 mm
External width:	600 mm
External height:	635 mm
External depth:	550 mm
Holes for fan coolers:	105 x 105 mm (2 places)
Bearing capacity:	30 kg
Color:	Black, RAL9004
Door:	<ul style="list-style-type: none">• Front: glass• Rear: metal, hinges• Front door can be installed as left side or right side one
Main features:	<ul style="list-style-type: none">• Cable entries are placed from the top and bottom• Cable entries broken off : 2 pcs 115 x 45 mm - from the top 2 pcs 115 x 45 mm - from the bottom• 2 keys included• 4 pcs Rack rails to mounting the devices
Weight:	24.6 kg
Manufacturer / Brand:	EPRADO
Guarantee:	2 years

Cabinet with door open





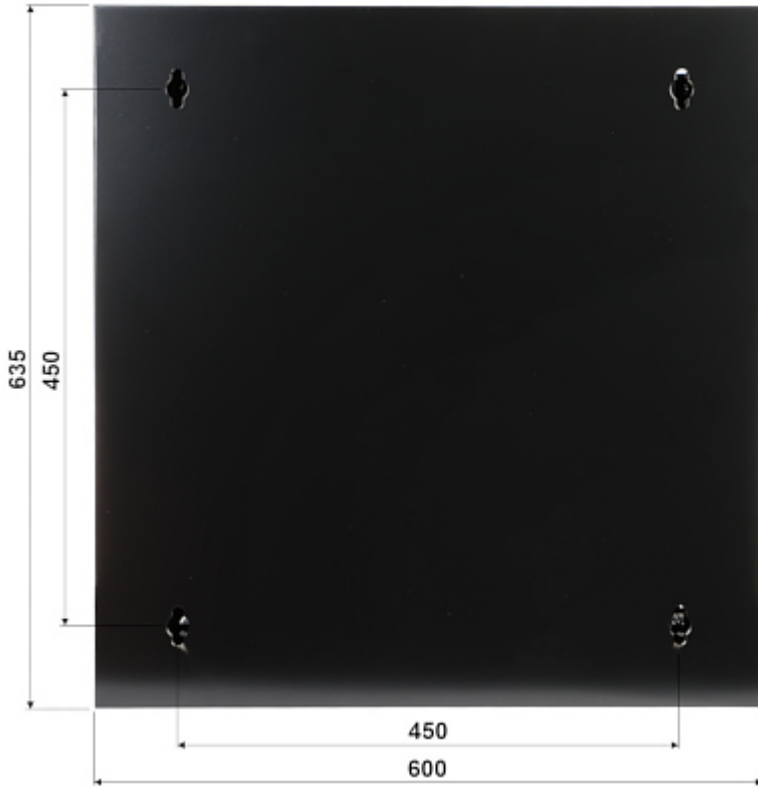
Mounting side view



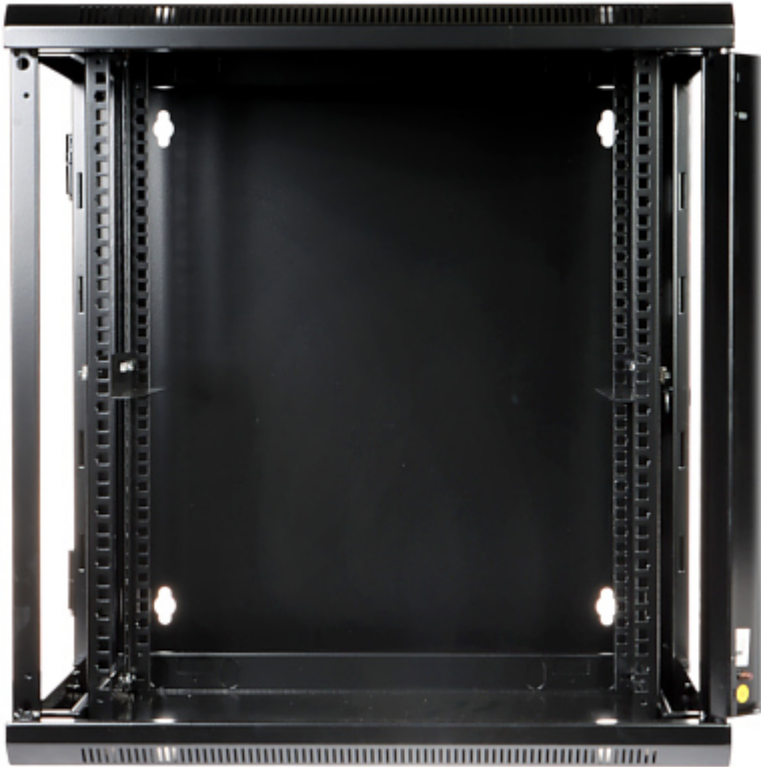
The cabinet with rear door open



Mounting dimensions



Internal view



Side view



User Manual

Code: EPRADO-R19-12U/550/2S
HANGING RACK CABINET, DOUBLE-SECTION **EPRADO-R19-12U/550/2S**

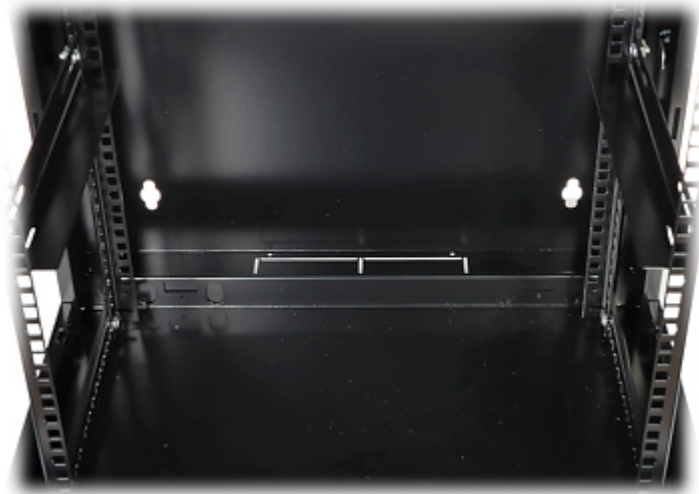




Holes for fan coolers



Cable entries



In the kit



PACKAGE

Dimensions (L x W x H): 0x0x0 mm	Gross Weight: 0 kg
----------------------------------	--------------------